

N71°08'02"E, 90.00'  
 R=15.00'  
 D=90°00'00"  
 L=23.56'  
 CH=21.27'  
 CB=N63°51'58"W

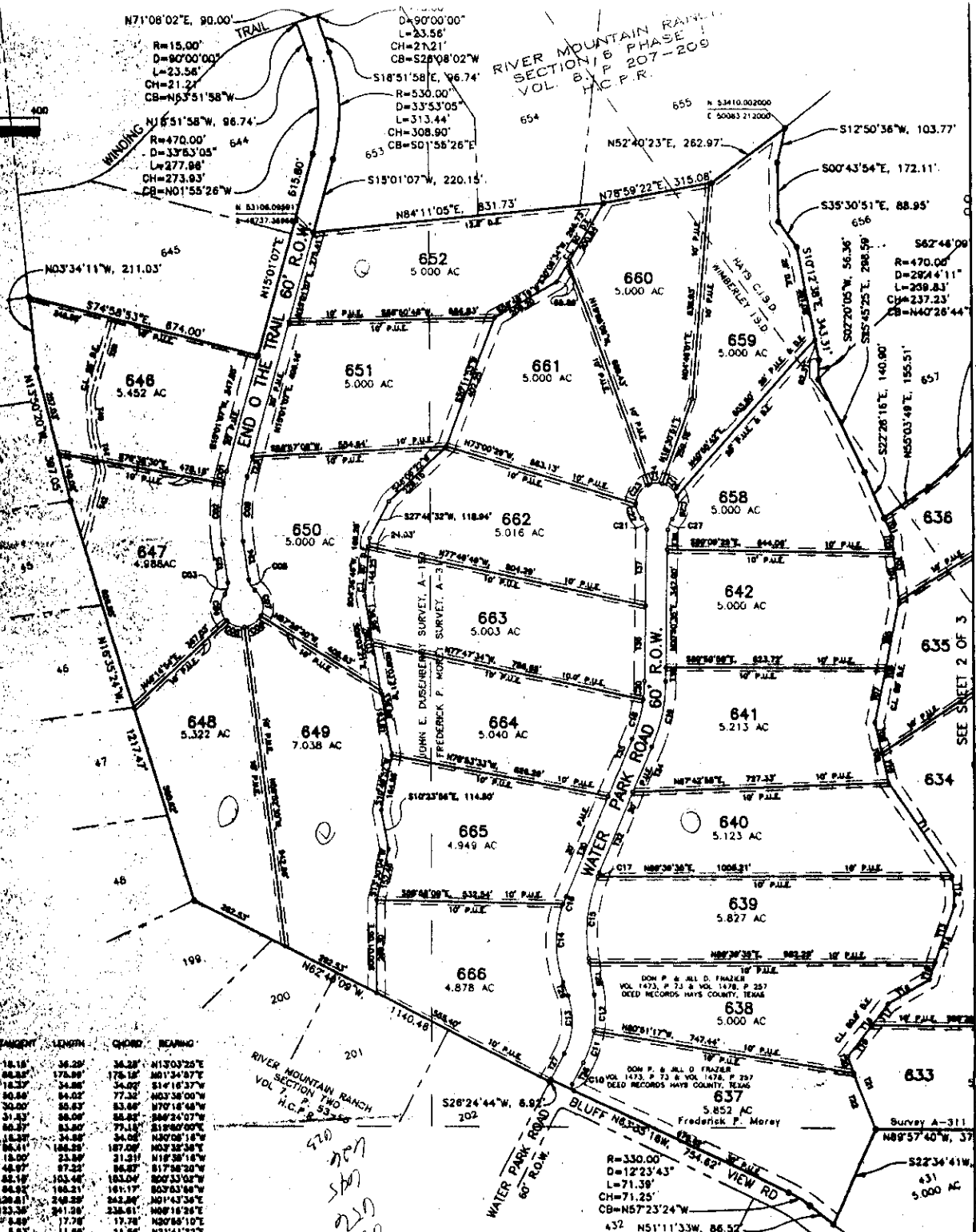
D=90°00'00"  
 L=33.56'  
 CH=21.27'  
 CB=S28°08'02"W

RIVER MOUNTAIN RANCH  
 SECTION 6 PHASE  
 VOL. 18 C.P.R.

N16°51'58"W, 96.74'  
 R=470.00'  
 D=33°53'05"  
 L=277.98'  
 CH=273.93'  
 CB=N01°55'26"W

R=530.00'  
 D=33°53'05"  
 L=313.44'  
 CH=308.90'  
 CB=S01°58'26"E

655 N 53410.002000  
 E 50083.212000



TANGENT TABLE

LINE	BEARING	DISTANCE
601	S22°28'16"E	86.28
602	S09°42'08"E	44.78
603	S09°42'08"E	181.40
604	S09°42'08"E	128.89
605	S11°11'24"W	264.30
606	S11°11'24"W	184.05
607	S12°17'04"E	63.06
608	S12°17'04"E	183.48
609	S09°17'04"E	90.40
610	S33°38'27"E	322.23
611	S05°38'45"E	84.47
612	S17°58'50"W	174.15
613	S17°58'50"W	228.04
614	S17°58'50"W	81.85
615	S09°17'04"E	138.81
616	S32°22'17"W	176.28
617	S19°10'57"E	86.80
618	S07°58'50"W	112.79
619	S07°58'50"W	118.78
620	S07°58'50"W	70.41
621	S09°17'04"E	85.61
622	S09°17'04"E	85.80
623	S18°54'48"E	42.72
624	S12°24'01"E	314.37
625	S22°24'01"E	218.27
626	S22°24'01"E	283.34
627	S22°24'01"E	183.34
628	S22°24'01"E	146.08
629	S09°17'04"E	100.80
630	S09°17'04"E	320.45
631	S09°17'04"E	218.84
632	S09°17'04"E	87.48
633	S19°34'00"W	236.41
634	S02°28'28"E	104.18
635	S11°21'25"E	116.83
636	S17°14'52"W	80.34

CHORD TABLE

LINE	BEARING	DELTA	TANGENT	LENGTH	CHORD	BEARING
601	S43.00°	07°00'23"	18.18'	36.29'	34.28'	N13°03'29"E
602	S89.00°	19°01'34"	88.83'	178.99'	178.12'	N01°34'57"E
603	S89.00°	44°24'58"	182.37'	364.88'	34.02'	S1°16'37"W
604	S89.00°	80°14'10"	364.74'	729.76'	71.32'	N03°38'00"W
605	S89.00°	137°07'28"	729.48'	1458.53'	145.88'	N70°16'48"W
606	S89.00°	184°00'46"	1458.96'	2917.06'	291.76'	S42°24'07"W
607	S89.00°	270°01'31"	2917.06'	5834.12'	583.52'	S19°00'00"E
608	S48.00°	04°24'58"	182.37'	364.88'	34.02'	N07°08'18"W
609	S48.00°	80°14'10"	364.74'	729.76'	71.32'	N03°38'00"W
610	S48.00°	137°07'28"	729.48'	1458.53'	145.88'	N70°16'48"W
611	S48.00°	184°00'46"	1458.96'	2917.06'	291.76'	S42°24'07"W
612	S48.00°	270°01'31"	2917.06'	5834.12'	583.52'	S19°00'00"E
613	S18.00°	44°01'34"	88.83'	178.99'	178.12'	S07°03'58"W
614	S48.00°	80°14'10"	364.74'	729.76'	71.32'	N03°38'00"W
615	S48.00°	137°07'28"	729.48'	1458.53'	145.88'	N70°16'48"W
616	S48.00°	184°00'46"	1458.96'	2917.06'	291.76'	S42°24'07"W
617	S48.00°	270°01'31"	2917.06'	5834.12'	583.52'	S19°00'00"E
618	S70.00°	04°24'58"	182.37'	364.88'	34.02'	N01°43'36"E
619	S70.00°	80°14'10"	364.74'	729.76'	71.32'	N03°38'00"W
620	S70.00°	137°07'28"	729.48'	1458.53'	145.88'	N70°16'48"W
621	S70.00°	184°00'46"	1458.96'	2917.06'	291.76'	S42°24'07"W
622	S70.00°	270°01'31"	2917.06'	5834.12'	583.52'	S19°00'00"E
623	S70.00°	324°00'00"	400.00'	785.40'	78.54'	N33°44'34"E
624	S70.00°	360°00'00"	400.00'	785.40'	78.54'	S49°44'21"E
625	S70.00°	00°00'00"	400.00'	785.40'	78.54'	S17°58'07"W
626	S70.00°	36°00'00"	400.00'	785.40'	78.54'	N2°03'02"E

# FINAL PLAT OF RIVER MOUNTAIN RANCH SECTION SIX PHASE TWO

LEGEND  
 ⊙ CALCULATED POINT  
 ⊙ 1/2" PIPE SET (UNLESS NOTED)  
 ⊙ 1/2" PIPE FOUND (UNLESS NOTED)  
 ⊙ COTTON SPRINKLE FOUND  
 ⊙ WOOD FENCE  
 ⊙ WIRE FENCE  
 ⊙ CHAIN LINK FENCE  
 ⊙ PUBLIC UTILITY EASEMENT  
 ⊙ D.E. DRAINAGE EASEMENT  
 ⊙ B.L. BUILDING LINE  
 ⊙ RECORD CALL  
 ⊙ 1/2" IRON ROD FOUND  
 ⊙ 1/2" IRON ROD SET

**JAMES E. GARON & ASSOC.**  
 PROFESSIONAL LAND SURVEYORS

10711 HWY 71 WEST  
 AUSTIN, TEXAS 78738  
 (512) 288-5877  
 FAX 288-4716

1008 CHESTNUT STREET  
 BASTROP, TEXAS 78822  
 (512) 303-4188